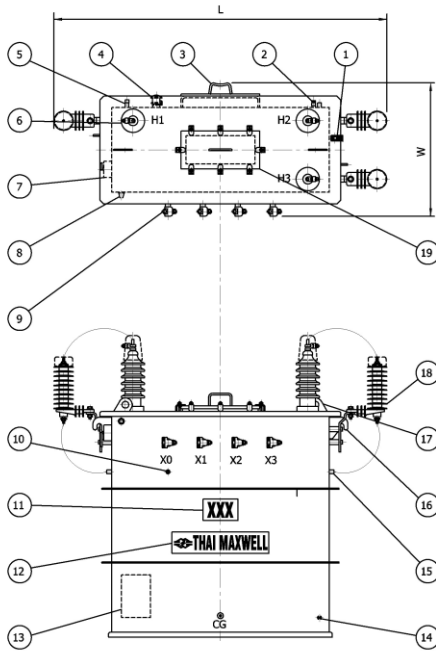


TECHNICAL DATA OF OIL-IMMERSED THREE PHASE COMPLETELY SELF PROTECTED TRANSFORMER



NO.	DESCRIPTION
1	THE COPPER STRIP
2	PRESSURE RELIEF VALVE
3	SUPPORT LUGS "Type C with Adaptor Plate"
4	OFF-LOAD TAP CHANGER
5	MANUAL PRESSURE RELIEF FITTING
6	HV BUSHING WITH INSULATION CAP
7	BREAKER OPERATING MECHANISM
8	SIGNAL LIGHT
9	LV BUSHING
10	EARTH TERMINAL FOR LV BUSHING
11	CAPACITY PLATE
12	TRADE MARK & COMPANY PLATE
13	NAME PLATE
14	EARTH TERMINAL
15	ARRESTER GROUNDING FITTING
16	LIFTING LUGS
17	LIFTING EYES
18	LIGHTNING ARRESTER WITH INSULATION CAP
19	HAND HOLE

Rated primary voltage : 12/24kV or 24kV

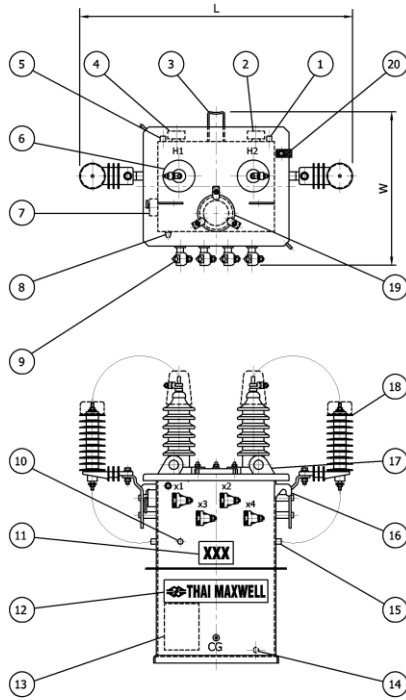
CAPACITY (kVA)	NO-LOAD LOSSES (Watt)	LOAD LOSSES AT 75 °C (Watt)	TOTAL LOSSES AT 75 °C (Watt)	IMPEDANCE AT 75 °C (%)	EFFICIENCY (P.F.=1)		VOLTAGE REGULATION AT FULL LOAD (P.F.=1) (%)	NOISE LEVEL dB (A) : 0.3 m	OUTLINE DIMENSION Approx.(mm.)			OIL QTY. (lt)	TOTAL WEIGHT Approx. (kg)
					1/2 Load (%)	Full Load (%)			W	L	H		
150	300	1000	1300	2.1 - 4.4	99.27	99.14	0.76	55	650	1570	1440	264	1220
225	415	1525	3050	3.2 - 4.4	99.30	98.66	0.77	55	690	1600	1420	340	1475

Note :

- The transformer is designed to operate under the following conditions
 - Altitude : Up to 1000 m above sea level
 - Ambient air temperature : 40 °C maximum
- Limits of temperature rise (top oil) : not exceeding 55 °C
(winding) : not exceeding 55 °C
- Insulation class : A
- Connection symbol : Dyn 1
- Reference standard : TIS 384-2543, IEC 60076
- Reference specification : SPEC.NO. 232: 01-2005, 233: 11-2011
- Special vector group and other primary voltage available upon request

The contents and specifications of this datasheet are subject to change without prior notice. No part of this data may be reproduced without the prior approval of Thai Maxwell Electric.

TECHNICAL DATA OF OIL-IMMERSED COMPLETELY SELF PROTECTED SINGLE PHASE TRANSFORMER



NO.	DESCRIPTION
1	PRESSURE RELIEF VALVE
2	DUAL HV SWITCH
3	SUPPORT LUGS "Type A"
4	OFF-LOAD TAP CHANGER
5	MANUAL PRESSURE RELIEF FITTING
6	HV BUSHING WITH INSULATION CAP
7	BREAKER OPERATING MECHANISM
8	SIGNAL LIGHT
9	LV BUSHING
10	EARTH TERMINAL FOR LV BUSHING
11	CAPACITY PLATE
12	TRADE MARK & COMPANY PLATE
13	NAME PLATE
14	EARTH TERMINAL
15	ARRESTER GROUNDING FITTING
16	LIFTING LUGS
17	LIFTING EYES
18	LIGHTNING ARRESTER WITH INSULATION CAP
19	HAND HOLE
20	THE COPPER STRIP

Rated primary voltage : 12/24kV or 24kV

CAPACITY (kVA)	NO-LOAD LOSSES (Watt)	LOAD LOSSES AT 75 °C (Watt)	TOTAL LOSSES AT 75 °C (Watt)	IMPEDANCE AT 75 °C (%)	EFFICIENCY (P.F.=1)		VOLTAGE REGULATION AT FULL LOAD (P.F.=1) (%)	NOISE LEVEL dB (A) : 0.3 m	OUTLINE DIMENSION Approx.(mm.)			OIL QTY. (lt)	TOTAL WEIGHT Approx. (kg)
					1/2 Load (%)	Full Load (%)			W	L	H		
37.5	130	375	505	1.2 - 4.4	98.82	98.67	1.09	48	580	1050	1220	71	365
50	125	420	545	1.6 - 4.4	99.09	98.92	0.93	48	600	1080	1220	80	410
75	125	420	545	2.1 - 4.4	99.39	99.28	0.66	51	640	1160	1295	116	580
100	415	1525	1940	2.1 - 4.4	98.43	98.10	1.61	51	690	1600	1420	160	900

Note :

1. The transformer is designed to operate under the following conditions
 - Altitude : Up to 1000 m above sea level
 - Ambient air temperature : 40 °C maximum
2. Limits of temperature rise (top oil) : not exceeding 55 °C
(winding) : not exceeding 55 °C
3. Insulation class : A
4. Polarity : Subtractive
5. Reference standard : IEC 60076
6. Special vector group and other primary voltage available upon request